



深圳市金驹科技有限公司

Shenzhen Jinju Technology Co., Ltd.

承认书

ACKNOWLEDGMENT

客户名称 (client's name) : _____

客户料号 (Customer item number) : _____

产品型号 (Product number) : JJ-5448300

产品名称 (product name) : 双通道 DC-DC恒流驱动电源

编制日期 (Date of preparation) : _____

制定 (Formulate)	审核 (Review)	批准 (Approve)
承认 (Admit)	审核 (Review)	批准 (Approve)

厂商: 深圳市金驹科技有限公司
 地址: 深圳市龙城街道龙西社区清水路鹏大地工业区14栋4楼
 电话: 0755 - 84861299 传真: 0755 - 84860299
 邮箱: 2880362299@qq.com 网址: <http://www.szjpower.cn/> <http://www.szjjled.com/>

Manufacturer: Shenzhen Jinju Technology Co., Ltd.
 Address: 4th Floor, Building 14, Peng Dadi Industrial Zone, Qingshui Road, Longxi Community, Longcheng District, Shenzhen
 Tel: 0755 - 84861299 Fax: 0755 - 84860299 E-mail: 2880362299@qq.com
 Website: <http://www.szjpower.cn/> <http://www.szjjled.com/>

产品描述:

★本款产品是一款高稳定性LED/双通道低压恒流驱动电源。内部滤波器件使用品牌绿宝石电容，高频低阻，105℃高温下，时长8000H（部分10000H），低温时间更长。专利的核心元件，高精度的恒流输出，完善的保护功能，以及超薄的外观结构会使您的灯具更加趋于完美。

★本产品采用集成电路设计方案，输出采用芯片恒流。具有超高的恒流精准度，及线路板合理的布局，使产品在工作中温升大大降低，从而提高产品的稳定性能。

★比市面上采用传统的1+1方式（开关电源+程序控制小板）在效率和恒流上都有很大的优势，市面上的都是采用1+1的控制模式，及小板上面都是采用色环电阻限压恒流。这种方案成本低廉，而且由于色环电阻的特性，造成此类产品的输出电流会因长时间点亮造成色环电阻升温，内部阻值的变化而改变电流并且浮动大。对灯珠影响非常大，大大的降低了使用寿命及灯具光衰问题。

product description:

★This product is a high stability LED / dual channel low voltage constant current drive power supply. The internal filter is made of brand emerald capacitor with high frequency and low resistance. The time is 8000h (part 10000h) at 105 °C and the low temperature time is longer. Patented core components, high-precision constant current output, perfect protection function and ultra-thin appearance structure will make your lamps more perfect.

★ This product adopts the integrated circuit design scheme, and the output adopts the chip constant current. With ultra-high accuracy of constant current and reasonable layout of circuit board, the temperature rise of the product is greatly reduced in the work, so as to improve the stability of the product.

★ Compared with the traditional 1 + 1 mode (switching power supply + program control board) on the market, it has great advantages in efficiency and constant current. In the market, the 1 + 1 control mode is adopted, and the color ring resistance is used to limit voltage and constant current. Because of the characteristics of the color ring resistance, the output current of this kind of product will be heated up by the color ring resistance for a long time, and the internal resistance value will change the current and float greatly. It has a great influence on the lamp bead, greatly reducing the service life and the light failure of the lamp.

产品特点:

- ★输入DC48V。
- ★高效率。
- ★集成度高，输出2路单独恒流，每路电流可单独定义（根据客户需求）。
- ★两组输出采用共正极的方式连接。
- ★输入防反接保护。
- ★输出开路、短路、过压、过温保护。
- ★采用LED专用防水环氧树脂AB胶，通过导热胶与铝壳接触，散热效果极佳，满负载输出时外壳表面温度不超过75℃（在环境25℃测量），室内户外均可使用，两端各设两个机械固定孔位，适用于多种内部安装应用。

Features:

- ★ Input DC48V.
- ★ High efficiency.
- ★ High integration, output two independent constant current, each current can be defined separately (according to customer requirements).
- ★ The two groups of outputs are connected in a common positive way. Input anti reverse connection protection.
- ★ Output open circuit, short circuit, over voltage, over temperature protection.
- ★ Led special waterproof epoxy resin AB glue is used to contact with aluminum shell through thermal conductive adhesive, which has excellent heat dissipation effect. The shell surface temperature under full load output is not more than 75 °C (measured at 25 °C) and can be used indoors and outdoors. Two mechanical fixed holes are set at both ends, which is suitable for various internal installation applications.

电气规格(Electrical specifications):

产品型号		JJ-5448300			
输入参数	输入电压	DC48V	电磁干扰	辐射	设计参考: EN55015
	输入电流	6.25A			
	额定功率	600W			
			环境特性	工作温度	-20~+65℃
				工作湿度	20~80%RH
				耐震动	10~500HZ, 2G, 10min/周期, X、Y、Z方向各60min
				温度系数	±0.05%/℃ (0~60℃)
输出参数	输出电压	39-43V (14串)			
	输出电流	2路 3.5A			
	电流精度	±3%			
	效率	96%			
	线性调整率	±2%	其他	寿命	>100000H (25℃)
	负载调整率	±2%		质保	3年
	启动/上升时间	22ms		平均无故障工作时间	>200000H
	断电保持时间	20ms		裸机尺寸	L*W*H: 100*84*32mm
			全铝防水尺寸	L*W*H: 160*90*45mm 955g±10g	
输入保护	防反接保护	反接不通电, 不损坏电源	包装方式	中性包装	
输出保护	短路保护	输出无电流, 异常条件移除后可自动恢复			
	开路保护	不接LED时, 输出电压等于输入电压			
	过温保护	100℃±10℃ 保护模式: 输出降电流 (外壳表面温度)			
	过压保护	保护模式: 输出降电流			
注	<p>* 为了延长使用寿命, 建议配置负载时多留30%的余量。例如: 设备需要50W的功率, 则应选用不小于80W的电源。</p> <p>* 所有电气性能测试均在25℃环境下完成, 如未特别说明, 所有规格参数均在DC48V, 环境温度25℃测量。</p>				

电性参数(Electrical parameters):

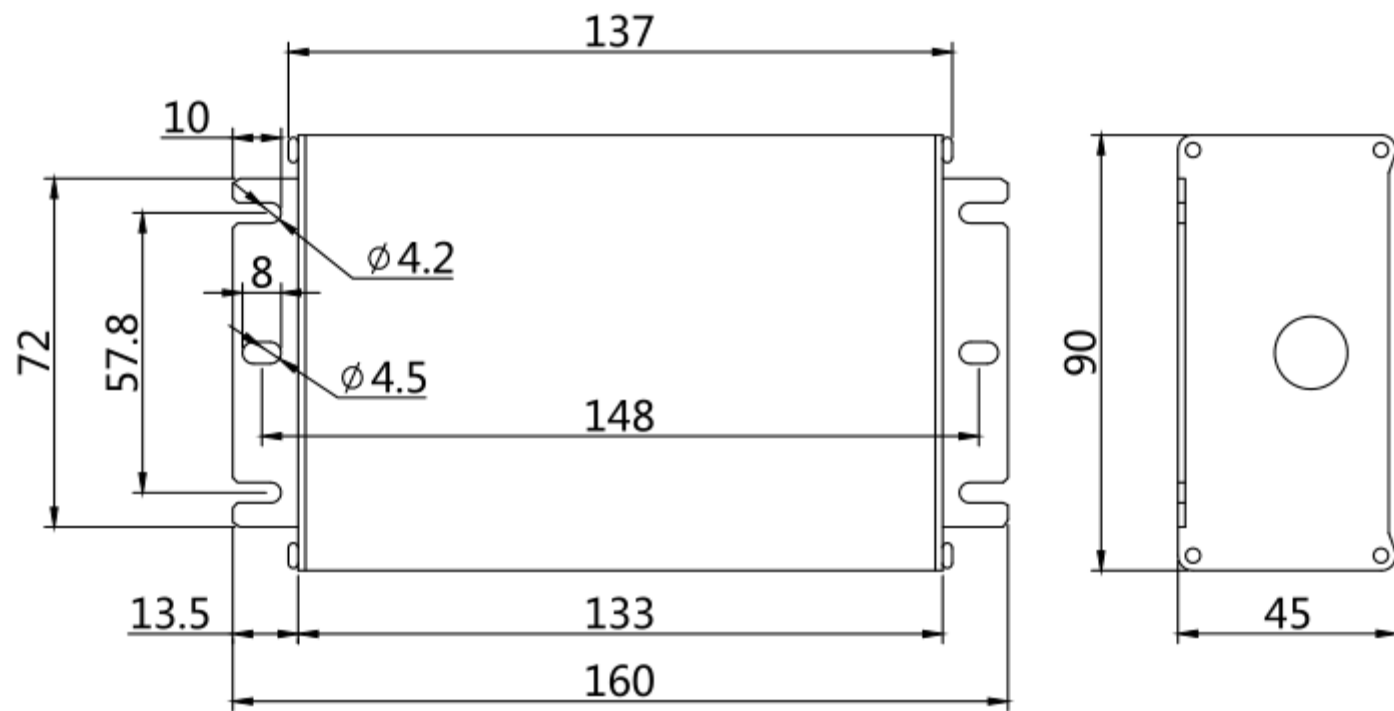
		参数(Parameter)	典型负载(Typical load)	单位(Unit)
Total power parameters	总功率参数	输入电压(Input voltage)	48	V
		输入电流(Input current)	6.33	A
		输入功率(Input power)	303.84	W
		待机功率(Standby power)	0.48	W
		输出电压(Output voltage)	42	V
		输出电流(Output current)	3.5	A
		输出总功率(Output total power)	297.78	W
R output parameter	R 输出参数	输入电流(Input current)	3.15	A
		输入功率(Input power)	151.2	W
		输出电压(Output voltage)	42	V
		输出电流(Output current)	3.54	A
		输出功率(Output total power)	148.68	W
G output parameter	G 输出参数	输入电流(Input current)	3.17	A
		输入功率(Input power)	152.16	W
		输出电压(Output voltage)	42	V
		输出电流(Output current)	3.55	A
		输出功率(Output total power)	149.1	W

注(Note):

①本列表数据除特殊说明外, Ta:25°C,湿度<75%, 输入标称电压和输出额定负载时测得。(Unless otherwise specified, Ta: 25 °C, humidity < 75%, measured at input nominal voltage and output rated load.)

②本列表数据仅供参考, 实际以产品实物为标准, 偏差范围<5%。(The data in this list is only for reference. In fact, it is based on the actual product, and the deviation range is < 5%.)

安装尺寸图(Installation dimension drawing):



Unit:mm

产品使用说明(Product instructions):

- ★本产品只适用于LED灯具(洗墙灯, 投光灯, 舞台灯等, 景观亮化场所),整机功率为**300W**。
- ★产品输入端是直流电输入, 对应产品标签上的DC “V+” 和DC “V-”, 输出端标识 “LED+”、“LED-”。“LED+” 为输出共阳端, 接LED共阳正极, “LED-” 为输出负极, 接LED负极。
- ★本产品为防水产品, 防水等级为IP67。
- ★使用裸板时, 请将产品做好绝缘处理。
- ★使用本电源时, 请注意检查和测试供电电源的电压是否与本电源标签上的电压相适应, 48V的设备应与48V的电源匹配。

注: 在使用本电源时, 请注意区分输入端和输出端, 确保正确接线, 核对无误后才能通电。

注: 请确保输入线正负极不接反, 确认无误, 再开电源。

注: 请先接好DC输出端的负载, 确认无误, 再开电源。

- ★ This product is only suitable for LED lamps and lanterns (wall washing lamp, projection lamp, stage lamp, landscape lighting places, etc.), and the overall power is **300W**.
- ★ The input of the product is DC input, corresponding to the DC "V+" and the DC "V-" on the product label, and the output terminal identifies "LED+" and "LED-". The "LED+" is the output common end, connected to the LED positive anode, the "LED-" is the output negative pole, and the LED negative pole is connected.
- ★ This product is a waterproof product with the waterproof grade of IP67.
- ★ When using bare board, please insulate the product.
- ★ When using the power supply, please check and test whether the voltage of the power supply is suitable for the voltage on the label of the power supply. The 48V equipment should match the 48V power supply.

Note: when using this power supply, please pay attention to distinguish the input end and the output end, ensure the correct wiring, and power on after checking.

Note: please make sure that the positive and negative poles of the input line are not reversed, and turn on the power supply again.

Note: please connect the load of DC output terminal first, and then turn on the power supply.

常见故障及处理方法(Common faults and treatment methods):

🔊 灯具不亮
The light is not bright

1 检查输入端接线是否有误
Check if the input wiring is incorrect.

2 是否进入关机状态 (RF版本)
Whether to enter the shutdown state (RF version)

3 地址码是否正确 (DMX版本)
Is the address code correct (DMX version)

🔊 灯具抖闪
Lamp flashing

1 输入电压是否在产品工作位范围之内
Is the input voltage within the product operating range

2 灯具参数是否与驱动电压匹配
Whether the lamp parameters match the driving voltage

3 LED灯线是否接触良好
Is the LED light wire in good contact