



深圳市金驹科技有限公司

Shenzhen Jinju Technology Co., Ltd.

承认书

ACKNOWLEDGMENT

客户名称 (client's name) : _____

客户料号 (Customer item number) : _____

产品型号 (Product number) : JJ-5448400

产品名称 (product name) : RGBW DC-DC恒流驱动电源

编制日期 (Date of preparation) : _____

制定 (Formulate)	审核 (Review)	批准 (Approve)
承认 (Admit)	审核 (Review)	批准 (Approve)

厂商：深圳市金驹科技有限公司

地址：深圳市龙城街道龙西社区清水路鹏大地工业区14栋4楼

电话：0755 - 84861299 传真：0755 - 84860299

邮箱：2880362299@qq.com 网址：<http://www.szjpower.cn/> <http://www.szjjled.com/>

Manufacturer: Shenzhen Jinju Technology Co., Ltd.

Address: 4th Floor, Building 14, Peng Dadi Industrial Zone, Qingshui Road, Longxi Community, Longcheng District, Shenzhen

Tel: 0755 - 84861299 Fax: 0755 - 84860299 E-mail: 2880362299@qq.com

Website: <http://www.szjpower.cn/> <http://www.szjjled.com/>

产品描述:

★本款产品是一款高稳定性LED/RGBW低压恒流驱动电源。内部滤波器件使用品牌绿宝石电容，高频低阻，105℃高温下，时长8000H（部分10000H），低温时间更长。专利的核心元件，高精确的恒流输出，完善的保护功能，以及超薄的外观结构会使您的灯具更加趋于完美。

★本产品采用集成电路设计方案，输出采用芯片恒流。具有超高的恒流精准度，及线路板合理的布局，使产品在工作中温升大大降低，从而提高产品的稳定性能。

★比市面上采用传统的1+1方式（开关电源+程序控制小板）在效率和恒流上都有很大的优势，市面上的都是采用1+1的控制模式，及小板上面都是采用色环电阻限压恒流。这种方案成本低廉，而且由于色环电阻的特性，造成此类产品的输出电流会因长时间点亮造成色环电阻升温，内部阻值的变化而改变电流并且浮动大。对灯珠影响非常大，大大的降低了使用寿命及灯具光衰问题。

product description:

★ This product is a high stability LED / RGBW low voltage constant current drive power supply. The internal filter is made of brand emerald capacitor with high frequency and low resistance. The time is 8000h (part 10000h) at 105 °C and the low temperature time is longer. Patented core components, high-precision constant current output, perfect protection function and ultra-thin appearance structure will make your lamps more perfect.

★ This product adopts the integrated circuit design scheme, and the output adopts the chip constant current. With ultra-high accuracy of constant current and reasonable layout of circuit board, the temperature rise of the product is greatly reduced in the work, so as to improve the stability of the product.

★ Compared with the traditional 1 + 1 mode (switching power supply + program control board) on the market, it has great advantages in efficiency and constant current. In the market, the 1 + 1 control mode is adopted, and the color ring resistance is used to limit voltage and constant current. Because of the characteristics of the color ring resistance, the output current of this kind of product will be heated up by the color ring resistance for a long time, and the internal resistance value will change the current and float greatly. It has a great influence on the lamp bead, greatly reducing the service life and the light failure of the lamp.

产品特点:

- ★输入DC48V。
- ★输出DC24-42V, 恒流2.8A。
- ★高效率。
- ★DMX512调光控制。
- ★集成度高, 输出4路R G B W单独恒流, 每路电流可单独定义 (根据客户需求)。
- ★R G B W 四组输出采用共正极的方式连接。
- ★输入防反接保护。
- ★输出开路、短路、过压、过温保护。
- ★采用LED专用防水环氧树脂AB胶, 通过导热胶与铝壳接触, 散热效果极佳, 满负载输出时外壳表面温度不超过75°C (在环境25°C测量), 室内户外均可使用, 两端各设两个机械固定孔位, 适用于多种内部安装应用。

Features:

- ★ Input DC48V.
- ★ Output DC24-42V, constant current 2.8A.
- ★ High efficiency.
- ★ DMX512 dimming control.
- ★ High integration, output 4 R G B W independent constant current, each current can be defined separately (according to customer requirements) .
- ★ R G B W The four sets of outputs are connected in a common positive way.
- ★ Input anti-reverse connection protection.
- ★ Output open circuit, short circuit, over voltage, over temperature protection.
- ★ Use LED special waterproof epoxy resin AB glue, contact with the aluminum shell through the thermal conductive glue, the heat dissipation effect is excellent, the surface temperature of the shell does not exceed 75 °C (measured in the environment 25 °C) when the output is full load, and can be used indoors and outdoors. There are two mechanical fixing holes on each end, suitable for a variety of internal installation applications.

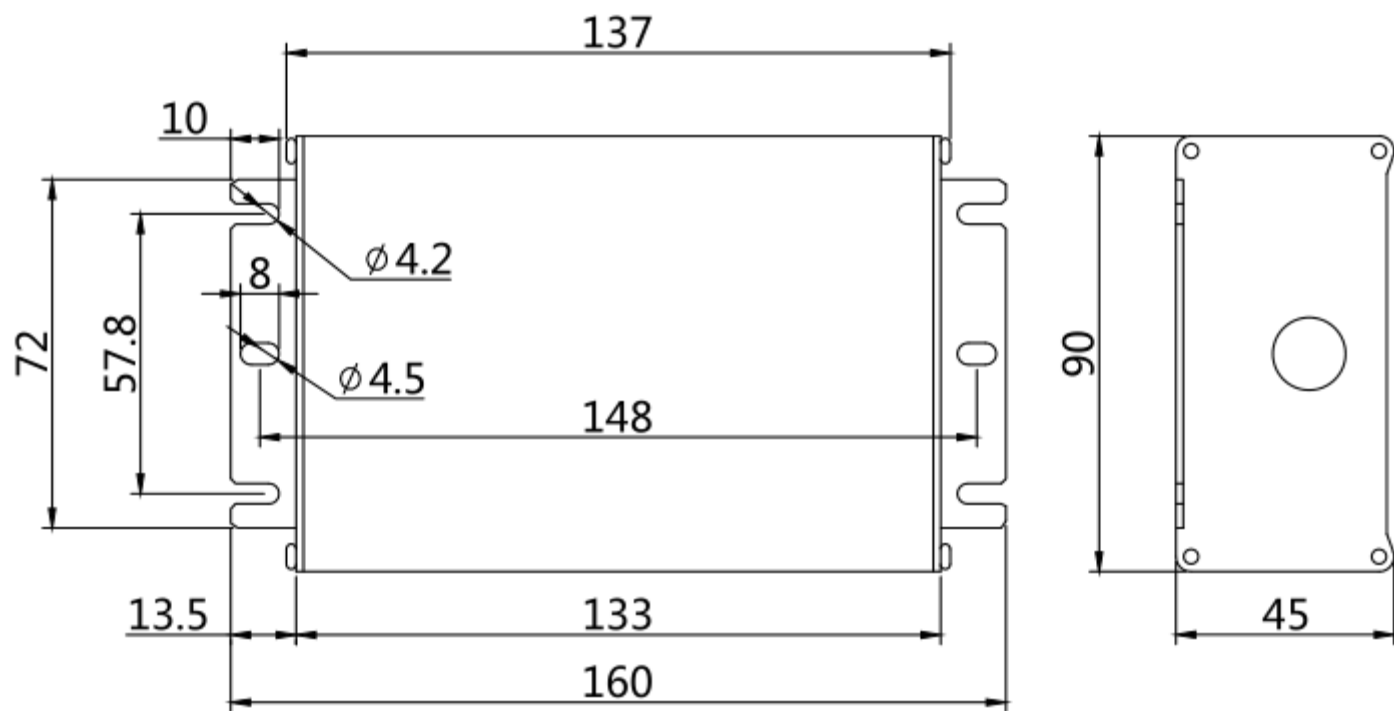
电气规格(Electrical specifications):

产品型号		JJ-5448400			
输入参数	输入电压	DC48V	电磁干扰	辐射	设计参考: EN55015
	输入电流	8.4A			
	额定功率	400W			
			环境特性	工作温度	-20~+65℃
				工作湿度	20~80%RH
				耐震动	10~500HZ, 2G, 10min/周期, X、Y、Z方向各60min
				温度系数	±0.05%/℃ (0~60℃)
输出参数	输出电压	24-42V (12串)			
	输出电流	4路 2.8A			
	电流精度	±3%	其他		
	效率	96%			
	线性调整率	±2%	寿命	>100000H (25℃)	
	负载调整率	±2%	质保	3年	
	启动/上升时间	22ms	平均无故障工作时间	>200000H	
	断电保持时间	20ms	裸机尺寸	L*W*H: 100*84*30mm	
			全铝防水尺寸	L*W*H: 160*90*45mm	
输入保护	防反接保护	反接不通电, 不损坏电源			
输出保护	短路保护	输出无电流, 异常条件移除后可自动恢复			
	开路保护	不接LED时, 输出电压等于输入电压			
	过温保护	100℃ ±10℃ 保护模式: 输出降电流 (外壳表面温度)			
	过压保护	保护模式: 输出降电流			
注	* 为了延长使用寿命, 建议配置负载时多留30%的余量。 * 所有电气性能测试均在25℃环境下完成, 如未特别说明, 所有规格参数均在DC48V, 环境温度25℃测量。				

电性参数(Electrical parameters):

参数(Parameter)		典型负载(Typical load)	单位(Unit)	参数(Parameter)		典型负载(Typical load)	单位(Unit)
Input total power parameter 输入总功率参数	输入电压(Input voltage)	48	V	B output parameter B 输出参数	输入电流(Input current)	2.2	A
	输入电流(Input current)	8.35	A		输入功率(Input power)	105.6	W
	输入功率(Input power)	400.8	W		输出电压(Output voltage)	36	V
	待机功率(Standby power)	2	W		输出电流(Output current)	2.82	A
	输出电压(Output voltage)	25-36	V		输出功率(Output total power)	101.52	W
	输出电流(Output current)	2.8	A				
	输出总功率(Output total power)	385	W	W output parameter W 输出参数	输入电流(Input current)	2.2	A
			输入功率(Input power)		105.6	W	
R output parameter R 输出参数	输入电流(Input current)	1.58	A		输出电压(Output voltage)	36	V
	输入功率(Input power)	75.84	W		输出电流(Output current)	2.82	A
	输出电压(Output voltage)	25	V		输出功率(Output total power)	135.36	W
	输出电流(Output current)	2.81	A				
	输出功率(Output total power)	70.25	W				
			注: ①本列表数据除特殊说明外, Ta:25℃, 湿度<75%, 输入标称电压和输出额定负载时测得。 ②本列表数据仅供参考, 实际以产品实物为标准, 偏差范围<5%。				
G output parameter G 输出参数	输入电流(Input current)	2.2	A	Note: ①This list data is measured at Ta: 25 ° C, humidity < 75%, input nominal voltage and output rated load, unless otherwise specified. ②The data in this list is for reference only. The actual product is based on the standard, and the deviation range is <5%			
	输入功率(Input power)	105.6	W				
	输出电压(Output voltage)	36	V				
	输出电流(Output current)	2.81	A				
	输出功率(Output total power)	101.16	W				

安装尺寸图(Installation dimension drawing):



Unit:mm

产品使用说明(Product instructions):

★本产品只适用于LED灯具(洗墙灯, 投光灯, 舞台灯等, 景观亮化场所),整机功率为**400W**。

★产品输入端是直流电输入, 对应产品标签上的DC “V+” 和DC “V-”, 输出端标识 “LED+”、“R-”、“G-”、“B-”、“W”。“LED+”为输出共阳端, 接LED共阳正极, “R-”、“G-”、“B-”、“W”为输出负极, 接LED负极。

★本产品为防水产品, 防水等级为IP67。

★使用裸板时, 请将产品做好绝缘处理。

★使用本电源时, 请注意检查和测试供电电源的电压是否与本电源标签上的电压相适应, 48V的设备应与48V的电源匹配。

注: 在使用本电源时, 请注意区分输入端和输出端, 确保正确接线, 核对无误后才能通电。

注: 请确保输入线正负极不接反, 确认无误, 再开电源。

注: 请先接好DC输出端的负载, 确认无误, 再开电源。

★ This product is only suitable for LED lamps (wall washer, flood light, stage light, etc., landscape lighting places), and the power of the whole machine is **400W**.

★The input terminal of the product is DC input, corresponding to the DC "V+" and DC "V-" on the product label, and the output terminal is marked with "LED+", "R-", "G-", "B-" and "W". "LED+" is the output common anode terminal, connected to the LED common anode, "R-", "G-", "B-" and "W" are the output negative terminals, connected to the LED negative terminal.

★This product is a waterproof product with a waterproof rating of IP67.

★When using bare boards, please make the product insulated.

★ When using this power supply, please pay attention to check and test whether the voltage of the power supply is compatible with the voltage on the power label. The 48V equipment should match the 48V power supply.

Note: When using this power supply, please pay attention to distinguish the input terminal and output terminal, make sure that the wiring is correct, and the power can only be turned on after checking.

Note: Please make sure that the positive and negative poles of the input line are not reversed, confirm that they are correct, and then turn on the power.

Note: Please connect the load of the DC output terminal first, confirm that it is correct, and then turn on the power.

常见故障及处理方法(Common faults and treatment methods):

🔊 灯具不亮
The light is not bright

1 检查输入端接线是否有误
Check if the input wiring is incorrect.

2 是否进入关机状态 (RF版本)
Whether to enter the shutdown state (RF version)

3 地址码是否正确 (DMX版本)
Is the address code correct (DMX version)

🔊 灯具抖闪
Lamp flashing

1 输入电压是否在产品工作位范围之内
Is the input voltage within the product operating range

2 灯具参数是否与驱动电压匹配
Whether the lamp parameters match the driving voltage

3 LED灯线是否接触良好
Is the LED light wire in good contact